

"The sales team was very friendly and they answered all of the questions I had. They also went out of their way to help me with my mortgage application. After completion, when I needed one or two things to be fixed, they did what they promised and fixed them. All in all, it was a good experience." – Mr Muhammad Daanyal, The Plaza at Riverside Quarter

# The Glenmore

The Glenmore is an impressive four bedroom detached villa, packed full of charming features inside and out. With a wide projection to the front featuring full-height windows on the upper floor, the exterior is especially appealing.

Inside, the off-set feature staircase adds interest to the spacious entrance hall. The light and airy living room has French doors leading to the private rear garden, and the kitchen includes an excellent range of Smeg appliances and plenty of space for a family dining table; there's also a separate dining room for those more formal occasions. A utility store – plumbed and wired for your laundry equipment – cloakroom and great storage complete the ground floor.

Upstairs, the master bedroom has full height windows, a walk-in wardrobe and en-suite shower room with a large shower, fitted vanity furniture and chrome heated towel rail. The guest bedroom also has built-in wardrobes and an en-suite shower room, whilst bedrooms three and four share an attractive family bathroom with shower and mixer tap at the bath, plus fitted vanity furniture. With plenty of storage and an integral garage with light and power, this is an ideal family home.

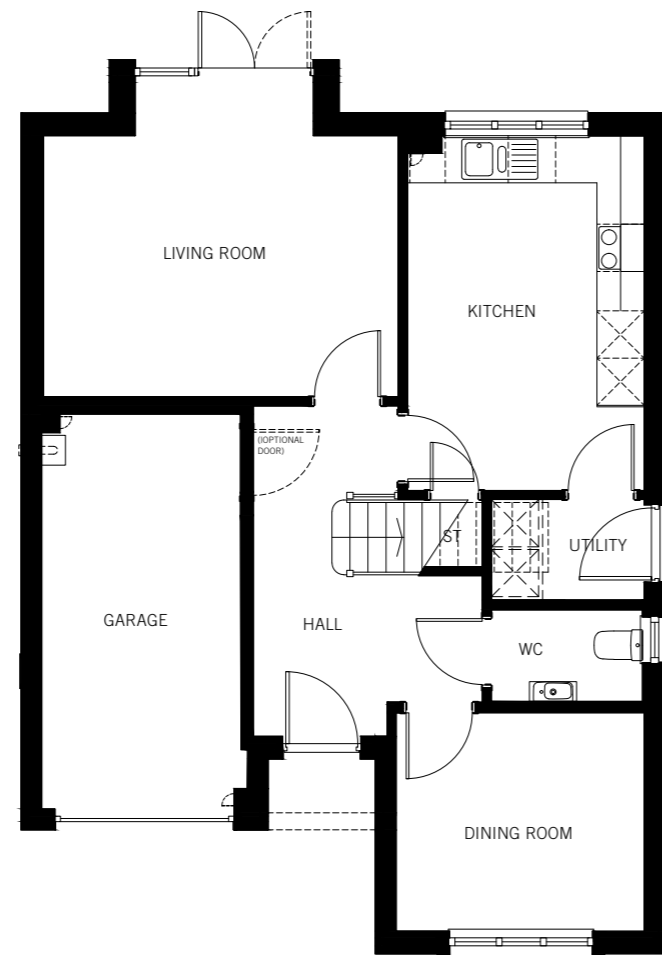
## KEY FEATURES

- Four bedrooms • Living room with French doors to garden • Well-appointed stylish kitchen with Smeg appliances • Utility store for laundry equipment • Separate dining room • En-suite shower room and walk-in wardrobe to master bedroom • En-suite shower room and built-in wardrobe to guest bedroom • Fitted vanity furniture and large mirror to bathroom and master en-suite • WC/cloakroom on ground floor • Integral garage with light and power



## GROUND FLOOR

Living room (including bay)	4500mm x 3990mm 14' 9" x 13' 1"
Dining room	3150mm x 2772mm 10' 4" x 9' 1"
Kitchen	4506mm x 3002mm 14' 9" x 9' 10"
WC	1918mm x 1163mm 6' 3" x 3' 10"
Utility	1940mm x 1276mm 6' 4" x 4' 2"
Garage	5077mm x 2537mm 16' 8" x 8' 4"



## FIRST FLOOR

Master bedroom (excluding wardrobe)	3161mm (min) x 3150mm 10' 4" x 10' 4"
En-suite (including shower)	2751mm x 1480mm (max) 9' 0" x 4' 10"
Guest bedroom	3397mm X 3060mm 11' 2" x 10' 0"
En-suite (including shower)	2252mm x 1470mm (max) 7' 5" x 4' 10"
Bedroom 3 (including optional wardrobe)	3785mm x 2867.5mm 12' 5" x 9' 4"
Bedroom 4	2767 mm (min) x 2420mm (min) 9' 1" x 7' 11"
Bathroom (including bath)	2092mm x 1705mm 6' 10" x 5' 7"

